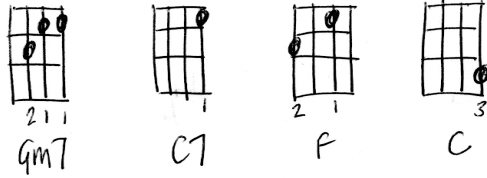


FOXY LADY - JIMI HENDRIX

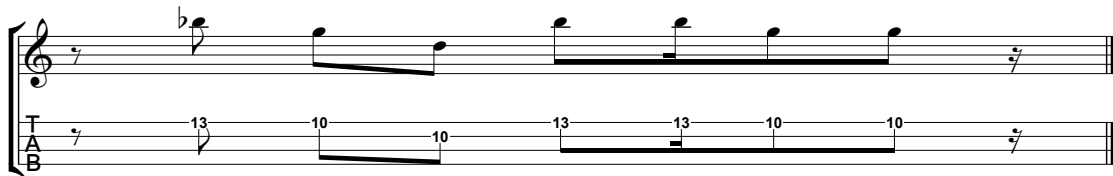


STRUM - ddd du ddd

INTRO - feedback (10th fret/A string) then into...

Beat 1	2	3	4	1	2	3	4
Gm7						C7	
		<i>Foxy!</i>					

*RIFF



Gm7 **C7**
 You know you're a cute little heart breaker
Gm7 C7
Foxy
Gm7
 And you know you are a sweet little
C7
 love maker
Gm7 C7
Foxy

Gm7 **F C**
 I wanna take you home
Gm7 F C
 I won't do you no harm, no
Gm7 F C
 You've got to be all mine, all mine

Gm7 stop!
Foxy Lady
 *RIFF

Gm7
 Now I see you come down on the
C7
 scene
Gm7
Foxy
Gm7 **C7**
 You make me wanna get up and a-scream
Gm7
Foxy, listen now

Gm7 **F C**
 I've made up my mind,
Gm7 F C
 I'm tired of wasting all my precious time
Gm7 F C
 You've got to be all mine, all mine

Gm7 Stop!
 ooo, *Foxy Lady*

BACK TO INTRO